

Message Box Creator Help System

Version 1.5

Table of Contents:

Program:

Overview

The main screen

Changes from 1.0 / Future Releases

Registration / Usage Rights:

Registering MsgBox Creator

Usage Rights / Legalities

Disk offer / Future update list

Contacting Author / Other Products:

Contacting the author

Other related products

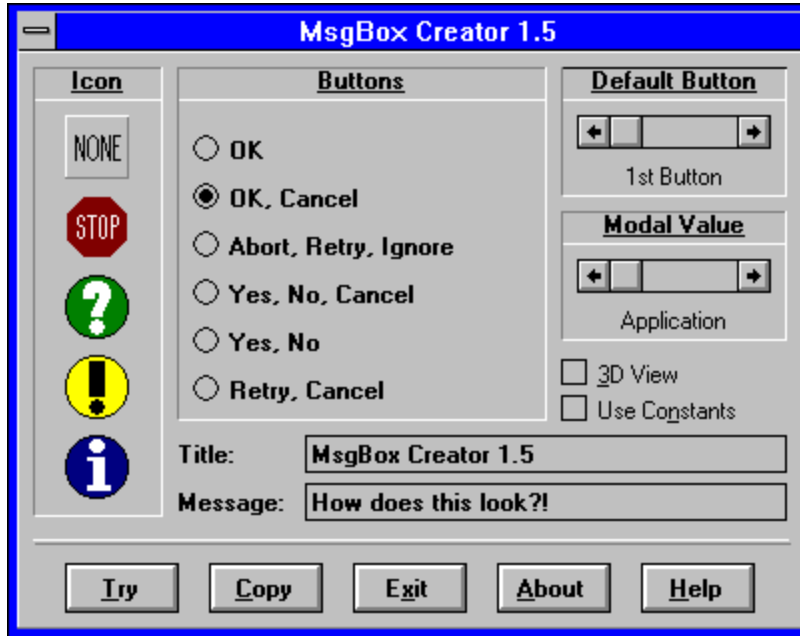
Overview:

Welcome to the Message Box Creator, version 1.5!

The Message Box Creator allows users of Microsoft Visual Basic to create message boxes with a graphical user interface. By showing a list of icons, you'll see exactly what kind of icon works best for the type of dialog you intend to use. After you play around with the settings, you can view the dialog box as it will look like in your program, even in 3-D! If the message box looks the way you want it, click on 'Copy,' and the program minimizes itself and places the code into the clipboard. All you have to do is paste the code in to your program, fill in the blanks, and run it! It couldn't be easier!

The Main Screen:

Click on the portion of the screen you want help on.



Changes From 1.0 / Future Releases:

Changes to the program, in the past & future.

- * = Feature was changed
- + = Feature was added
- = Feature was taken away

Changes since 1.0

- * Bug fixes: Stop icon would not work
- + Added .INI file for last settings
- + Added 'Use Constants' option

Future Changes

The 'Use Constants' option was requested by a member of CompuServe, and was implemented in to a bug-fix, version 1.5. Few changes will be made to this program by me, most improvements will be taken from users of the MsgBox Creator. If you think that something needs to be added, fixed, or taken away, leave me a message describing what should be changed. See Contacting the Author for information on how to get a hold of me.

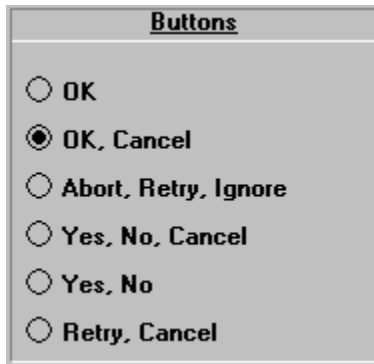
Icons:



This area allows you to select an icon to appear in your message box. There are four different icons, or you can decide to keep your dialog icon-less. You should choose the icon carefully to reflect the kind of response you would want from your user. If implemented correctly, the icon can add very positive emphases on your interface.

To select an icon, just click on it. The currently hi-lighted icon will have a single-pixel 3D bevel around it.

Button Arrangement:



The image shows a dialog box titled "Buttons" with a list of radio button options. The options are:

- OK
- OK, Cancel
- Abort, Retry, Ignore
- Yes, No, Cancel
- Yes, No
- Retry, Cancel

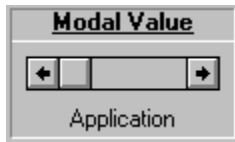
This area allows you to select the button arrangement you would like to appear on your dialog. The appropriate Select Case clause will be inserted into your VB code. The button arrangement is the most important part of the message box. The options follow the standard radio button theme.

Default Button:



This area allows you to choose which button would be the most appropriate to receive the focus automatically. If you choose a single or double button arrangement and select the third button to receive focus, the last button will be selected.

Modal Value:



This area allows you to choose if the dialog box will allow the user to move to another application while the message box has the focus. If you choose application, then you cant do anything in your program until it gets a response. Selecting System Modal will lock the system until the user clicks a button.

3-D View & Constants:

- 3D View
- Use Constants

The View in 3-D option will show the message box in 3-D. By doing this, it only shows the dialog in 3-D in Try mode. You need to insert your own code to show the dialogs in 3-D.

The Use Constants option will cause the code in the clipboard to use the constants defined in VB.HLP instead of numerical values. NOTE: You must insert the code to define the constants before the Select Case condition will operate correctly.

Title & Message:

Title:	<input type="text" value="MsgBox Creator 1.5"/>
Message:	<input data-bbox="321 327 795 367" type="text" value="How does this look?!"/>

In order for your dialog box to be worth anything, you need a title and caption. The title goes into the window area to the right of the control box, and the caption appears next to the icon (if any) and above the buttons. This is where you make the message box convey a message to the user.

Registering Message Box Creator

All it takes is a simple message!

Even though I do not expect any payment for the Message Box Creator, I do hope you will register. The legal limit for shareware products is 30 days, but since it doesn't cost anything, what's the use of a limit? <Grin> Registering MsgBox Creator will let me know how many people get my stuff. If you do decide to register, leave me a message on CompuServe (or send regular mail) telling what version you have, about when you got it, and any other comments & suggestions you have. For information on contacting me, see Contacting the Author in this file.

When you register, you will also have the opportunity to request the program on disk, receive mailing lists, and a printed manual. You will also get information on other products when they become available.

ENJOY!!

Usage Rights / Legalities

For whatever reason you decided to read this part...

You are granted rights to use this program in any means you see fit, as long as you abide by the following rules. In this section, the software refers to all executable files, help & documentation files, and anything else included in the archive you received.

- * You are allowed to copy this program in any way, and pass it on to anyone as long as the software is *not* modified in any way. If you modify the software, you must not distribute it. You can use updated versions of the software for your own use, though. The updated files can not be supported by me, and therefore you assume all risks of using the new software.**
- * If you pass along the archive to anyone else, you must make sure no files are added or deleted from the archive before you can pass it on.**
- * Since the software costs nothing to use, I do not assume any responsibility for the use of this software. By using the programs, you accept this.**
- * If any software you retrieve by this author requests a registration fee (it probably wont), then you are required to pay for the software after the limit of 30 days, which you are allowed to use the software for free and without any commitment.**
- * This software is copyrighted by the author in the year 1994.**
- * You cannot re-sell this product for a profit. Any exchange of money for purposes other than duplication & distribution costs is illegal.**
- * Any of these issues can change at any time, without any notice required. In case anything does change, you should re-read this section on any new documentation you receive about this software.**
- * Assuming this section ever gets read, you agree to all the above issues. If you dont, you must discontinue any use and immediately wipe any copies of this software that you have, as thoroughly as possible.**

Disk Offer / Future Update List

If you like this version, how about information on updates?

However you managed to get your paws on this version on this package, you may want the original, definitely unmodified software on disk. Sorry, but I can only send the software on 3½ inch high-density disks. To receive the software on disk, leave you address, phone number, and E-Mail message address. Send a check for \$5 U.S. funds, and I will mail the disk and a printed manual to your front door as soon as possible. If you dont receive the disk within 3 weeks, send me *another* message and I will make sure it gets to you.

Also, if you would like to know about future updates I can take care of that too! If you dont want to mess with constantly sending money for updates, you can send a check in a multiple of \$5 and I will send that many major revisions when they become available. When you decide to cancel your subscription I will send a check back with the amount of money remaining. (The same applies if I quit making new versions of the software.)

Contacting The Author:

Keep in touch!

To register, leave comments & suggestions, talk, or gripe about this software, you can reach me at the following places:

CompuServe™ E-Mail:

Using Robert E. Wallettes Mailbox
71756,1207

Snail Mail:

Nick Walette
21-742 Apt. D Fig Street
Elmendorf AFB, AK 99506 (USA)

Telephone:

Home Phone
1-907-753-9263

Telepathy / Channeling:

Sorry, Im not that open-minded.

Other Related Products:

Interested in some more tools for programming assistance?

Since this is my first real commercial product, I can only say what I plan to have out.

Setup Development Kit:

This is my big project right now. If you would like an alternate Setup program for your Visual Basic programs, plan to download this. The Setup Development Kit (SDK) is designed to help you create Setup programs quickly and easily. Based upon the Microsoft Setup Wizard, this is a whole package of software to create a customized Setup program, without the programming hassle. There is a WYSIWYG editor that shows you how to customize and include certain options, and displays the output so you know what it will look like. Choose from a 2-D, 3-D, or overdone 3-D look. Include only the dialogs you want to bother your users with, and leave the rest out. It requires NO direct manipulation of .INI, .INF, or .CFG files (except for alternative list files). Everything is point and click, then watch it show you your work, right before your eyes!

Freeware; shareware version available

Designed & Produced in VB 3.0, some .DLL construction done in Borland C++ 4.0.

Availability: Unreleased

Definition WYSIWYG

Acronym for **W**hat **Y**ou **S**ee **I**s **W**hat **Y**ou **G**et. Refers to a window showing exactly what is going on when settings are changed. Converse: Rough draft.

